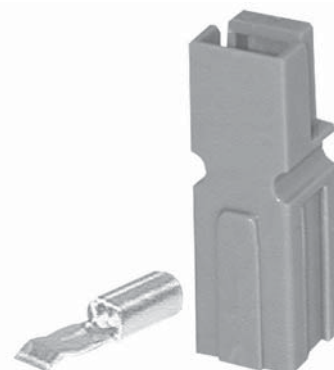


Powerpole® connectors provide cost-effective reliability, design flexibility and safety for your products' manufacture, installation and maintenance.

The housings are modular and genderless. Powerpole® connectors provide 600 Volts continuous, AC or DC operation. Wire sizes range from #10 to #14 AWG (5.3 to 2.1 mm²). Contacts are available in reeled and loose piece designs to support all production needs from engineering prototype, low volume and high volumes products.

FEATURES

- Flat wiping contact system**
Minimal contact resistance at high current, wiping action cleans contact surface during connection/disconnection
- Colored modular housings**
Provides visual identification of proper mating connector
- Molded-in dovetails**
Secures individual connectors into "keyed" assemblies which prevents misconnection with similar configurations



PRODUCT SPECIFICATIONS

| Connector Model | PP45 | Connector Model | PP45 |
|--|------------|--|--------------|
| UL Current Rating (Amperes)* | 40* | Life | |
| UL Voltage Ratings (Volts)** | 600* | a. No load (Contact/Disconnect Cycles) | To 10,000 |
| Contact Barrel Wire Size (AWG) | #10 to #14 | b. Under Load (Hot Plug 250 cycles @ 120V) | 30A |
| (mm ²) | 5.3 to 2.1 | Avg. Connection/Disconnect (lbs) | 3 |
| Maximum Wire Insulation Diameter (inches) | 0.175 | Operating Temperature Range °C*** | -20° to 105° |
| (mm) | 4.45 | °F | -4° to 221° |
| AVG Contact Resistance* (micro-ohms) | 525 | Flammability Rating of Housing Material | UL94 V-0 |
| Insulation Withstanding Test Voltage (Volts AC/DC) | 2200 | | |
| Contact Retention Force (lbs) | 25 | | |

* UL Rated for 65°C rated wire or cable size
** Both AC & DC Voltage
*** Contact factory for higher temperature rated connectors

ORDERING INFORMATION

Housing & 45 amp Contact

| Part Number | Housing Color | Wire | |
|-------------|---------------|-------|---------|
| | | AWG | sq. mm |
| 1345 | Red | 10/14 | 5.3/2.1 |
| 1345G5 | Green | 10/14 | 5.3/2.1 |
| 1345G6 | Black | 10/14 | 5.3/2.1 |
| 1345G7 | White | 10/14 | 5.3/2.1 |
| 1345G8 | Blue | 10/14 | 5.3/2.1 |
| 1345G16 | Yellow | 10/14 | 5.3/2.1 |
| 1345G17 | Orange | 10/14 | 5.3/2.1 |
| 1345G18 | Gray | 10/14 | 5.3/2.1 |
| 1345G21 | Brown | 10/14 | 5.3/2.1 |
| 1345G22 | Pink | 10/14 | 5.3/2.1 |
| 1345G23 | Purple | 10/14 | 5.3/2.1 |

45 amp Contacts

| Part Number | Description | Wire | |
|-------------|----------------|-------|---------|
| | | AWG | sq. mm |
| 261G2 | Reel, Low Det | 10/14 | 5.3/2.1 |
| 269G3 | Reel, High Det | 10/14 | 5.3/2.1 |

contacts continued

| Part Number | Description | Wire | |
|-------------|-----------------|-------|---------|
| | | AWG | sq. mm |
| 261G2-LPBK | Individual | 10/14 | 5.3/2.1 |
| 200G1L | Superflex, reel | 10/14 | 5.3/2.1 |
| 201G1H | Superflex, reel | 10/14 | 5.3/2.1 |

Housings Only

| Part Number | Description |
|-------------|----------------|
| 1327 | Red housing |
| 1327G5 | Green housing |
| 1327G6 | Black housing |
| 1327G7 | White housing |
| 1327G8 | Blue housing |
| 1327G16 | Yellow housing |
| 1327G17 | Orange housing |
| 1327G18 | Gray housing |
| 1327G21 | Brown housing |

housings continued

| Part Number | Description |
|-------------|----------------|
| 1327G22 | Pink housing |
| 1327G23 | Purple housing |

Accessories

| Part Number | Description |
|-------------|--------------------------------|
| 1441G1 | Female splash boot |
| 1442G1 | Male splash boot |
| 110G21 | Blok lok, 2 pole |
| 110G12 | Blok lok, 4 pole |
| 1399G9 | Red mounting wing |
| 1399G8 | Blue mounting wing |
| 1399G1 | Red short spacer with end hole |
| 1399G2 | Red long spacer |
| 1399G6 | Red short spacer without hole |
| 1462G1 | 2 & 4 pole mounting clamp set |

...continued on next page

ORDERING INFORMATION

accessories continued

| Part Number | Description |
|-------------|--|
| 1462G2 | 3 & 6 pole mounting clamp set |
| 1462G3 | 4 & 8 pole mounting clamp set |
| 110G16 | Retaining pins, 1 high block of connectors |
| 110G17 | Retaining pins, 2 high block of connectors |

Tooling

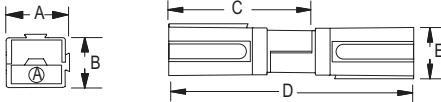
| Part Number | Description |
|-------------|-----------------------------------|
| 111038G2 | Contact insertion/extraction tool |
| 1309G3 | Hand tool for p/n 261G2-LPBK |
| 1309G5 | Hand tool for p/n 200G2L & 201G2H |
| 260G1 | Applicator only (110V & 220V) |
| 260G14* | Applicator only (110V & 220V) |
| 260G15* | Applicator only (110V & 220V) |
| 260G18** | Applicator only (110V & 220V) |
| 280G1 | Applicator and press (110V, 60Hz) |
| 250G1 | Press only (110V, 60Hz) |
| 280G4 | Applicator and press (220V, 50Hz) |
| 250G2 | Press only (220V, 50Hz) |

* Denotes mini-style applicator for use with existing "K" or "T" press
 ** Denotes mini-style applicator for use with existing "K" or "T" and "G" press

DIMENSIONS

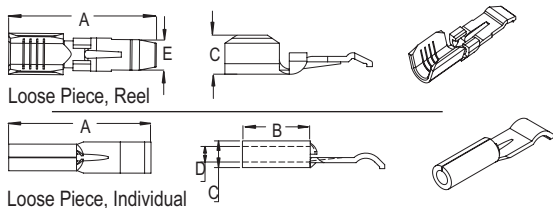
Powerpole® Housing

| Series | -A- mm in. | -B- mm in. | -C- mm in. | -D- mm in. | -E- mm in. |
|--------|---------------|---------------|---------------|---------------|---------------|
| PP45 | 7.9 .31 | 7.9 .31 | 26.6 .97 | 41.3 1.63 | 8.4 .33 |



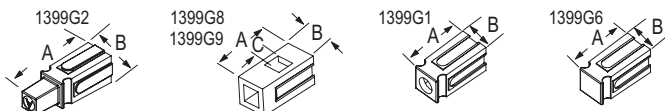
Contacts

| Part Number | -A- mm in. | -B- mm in. | -C- mm in. | -D- mm in. | -E- mm in. |
|-------------|---------------|---------------|---------------|---------------|---------------|
| 200G1L | 17.27 .68 | 6.35 .25 | 6.1 .24 | N/A N/A | 3.68 .145 |
| 201G1H | 17.27 .68 | 6.35 .25 | 6.1 .24 | N/A N/A | 3.68 .145 |
| 261G2 | 17.27 .68 | 6.35 .25 | .08 .25 | N/A N/A | 3.68 .145 |
| 269G3 | 17.27 .68 | 6.35 .25 | 6.1 .24 | N/A N/A | 3.68 .145 |



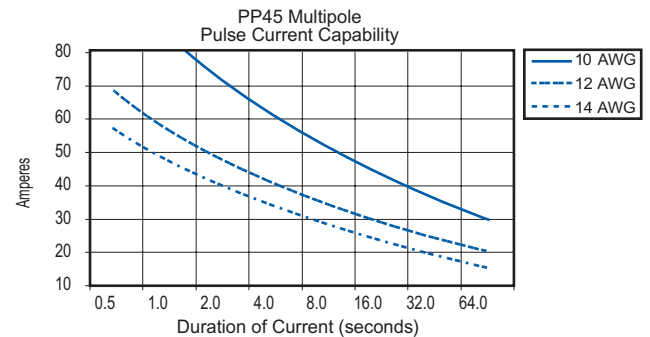
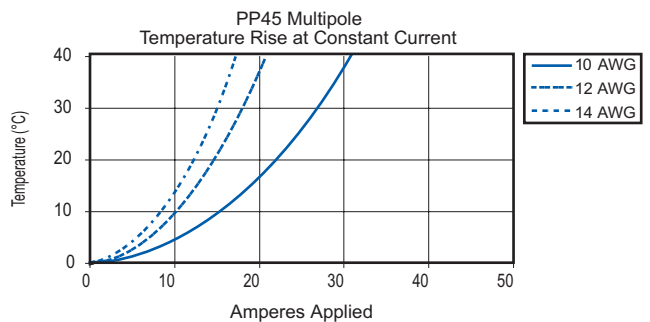
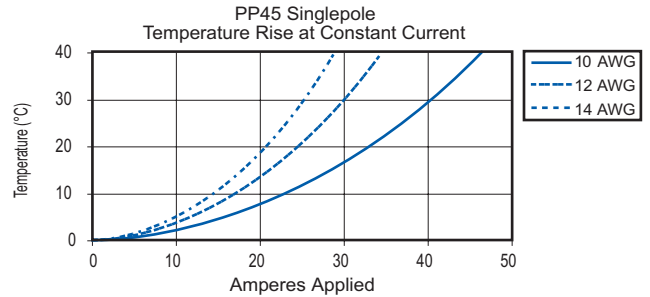
Spacers

| Part Number | -A- mm in. | -B- mm in. | -C- mm in. |
|-------------|---------------|---------------|---------------|
| 1399G1 | 16.6 .655 | 7.9 .312 | N/A |
| 1399G2 | 24.6 .968 | 7.9 .312 | N/A |
| 1399G6 | 16.6 .655 | 7.9 .312 | N/A |
| 1399G8 | 16.6 .655 | 7.9 .312 | 4.6 .180 |
| 1399G9 | 16.6 .655 | 7.9 .312 | 4.6 .180 |



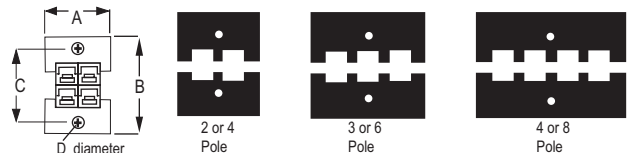
All Data Subject To Change Without Notice

TEMPERATURE RISE CHARTS



Mounting Clamps

| Part Number | -A- mm in. | -B- mm in. | -C- mm in. | -D- mm in. | Number of Poles |
|-------------|---------------|---------------|---------------|---------------|-----------------|
| 1462G1 | 23.8 0.94 | 27.0 1.06 | 17.1 0.67 | 4.0 0.16 | (2 Pole) |
| 1462G1 | 23.8 0.94 | 34.9 1.37 | 25.0 0.98 | 4.0 0.16 | (4 Pole) |
| 1462G2 | 31.8 1.25 | 27.0 1.06 | 17.1 0.67 | 4.0 0.16 | (3 Pole) |
| 1462G2 | 31.8 1.25 | 34.9 1.37 | 25.0 0.98 | 4.0 0.16 | (6 Pole) |
| 1462G3 | 39.6 1.56 | 27.0 1.06 | 17.1 0.67 | 4.0 0.16 | (4 Pole) |
| 1462G3 | 39.6 1.56 | 34.9 1.37 | 25.0 0.98 | 4.0 0.16 | (8 Pole) |



DS-PP45 REV02